

# Harpell Center Main Hall





# Harpell Center

## 2e floor Hall



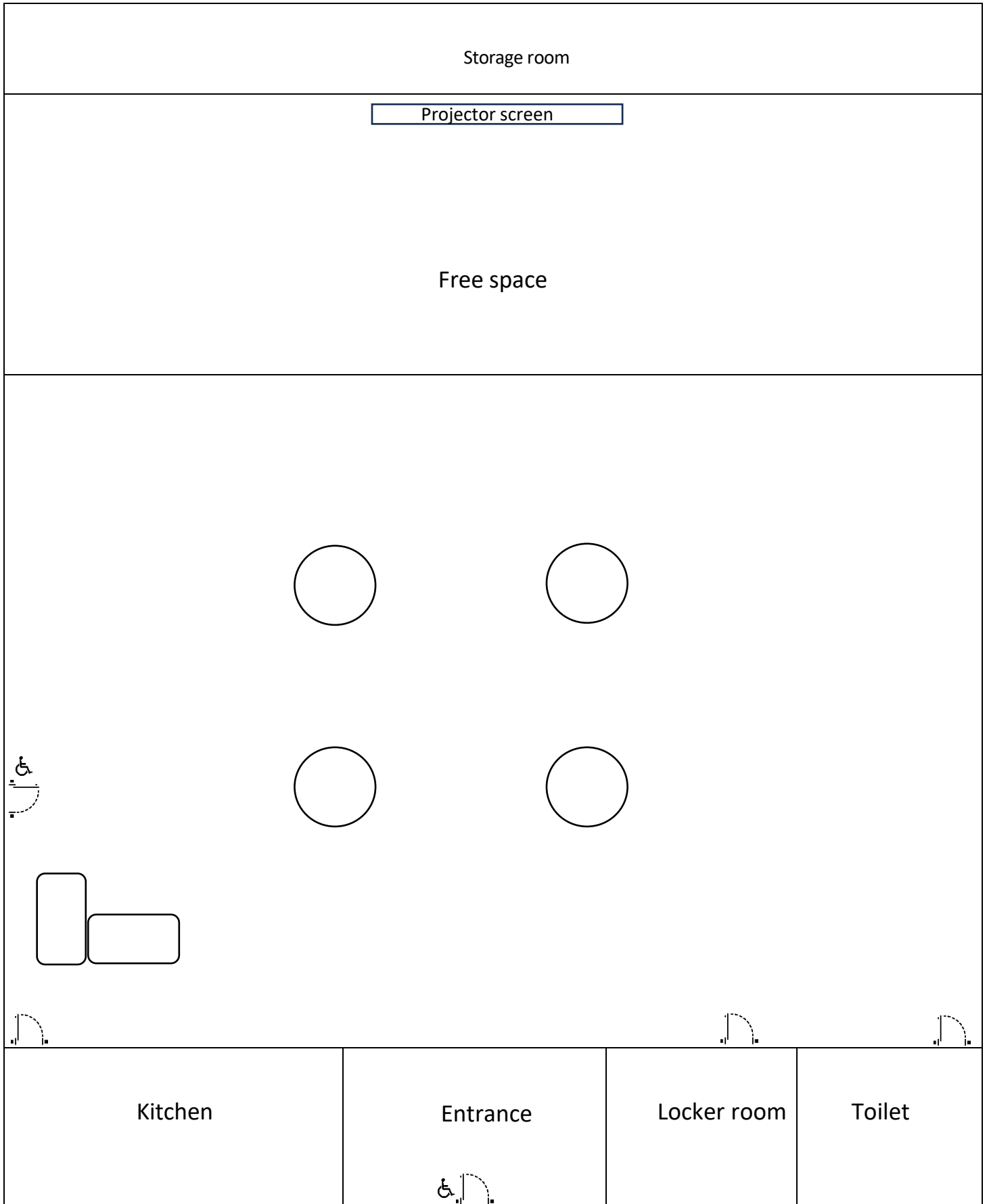


# Aumais park Cottage Reception Hall



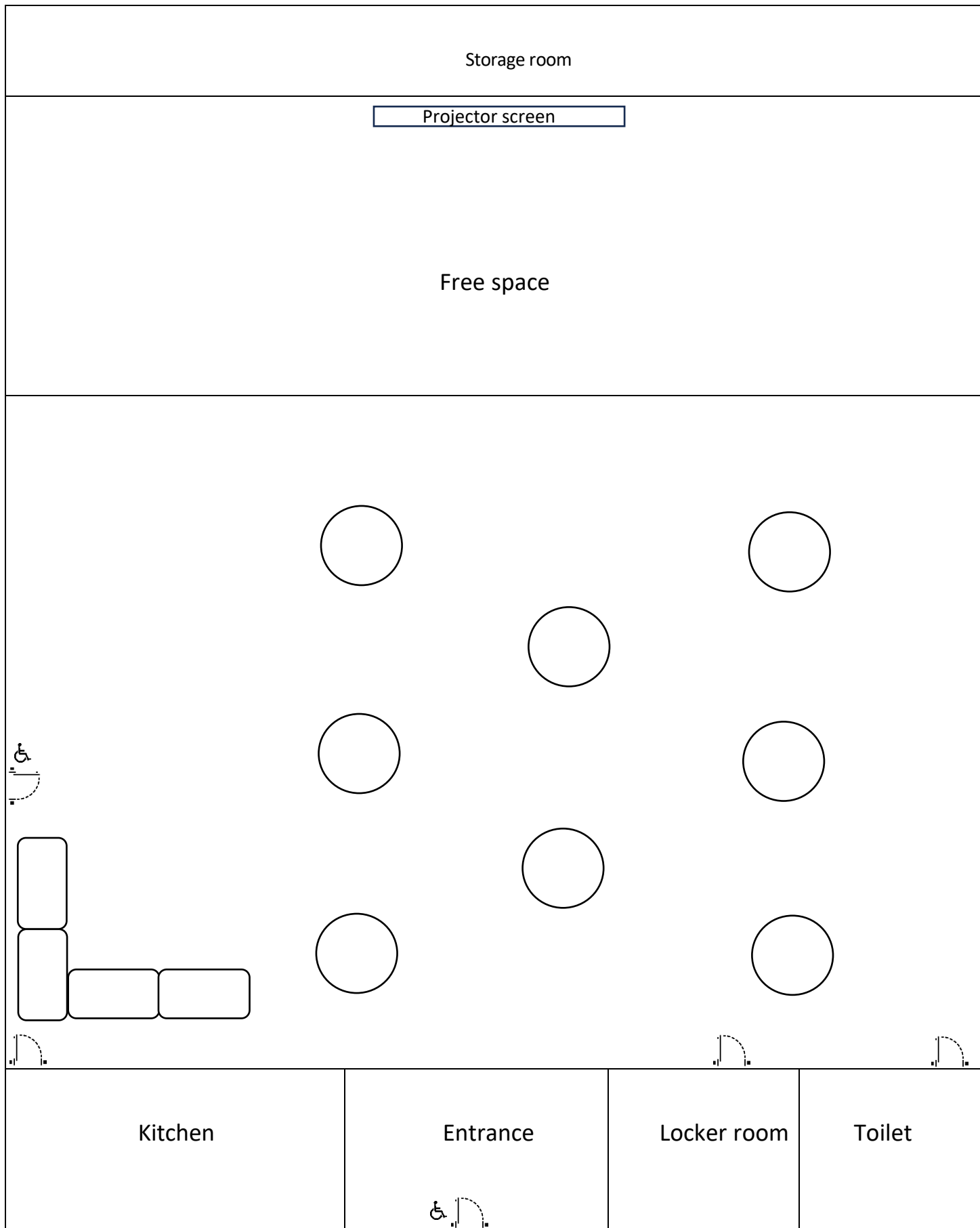
# Harpell Center

## Room plan A (32 people)



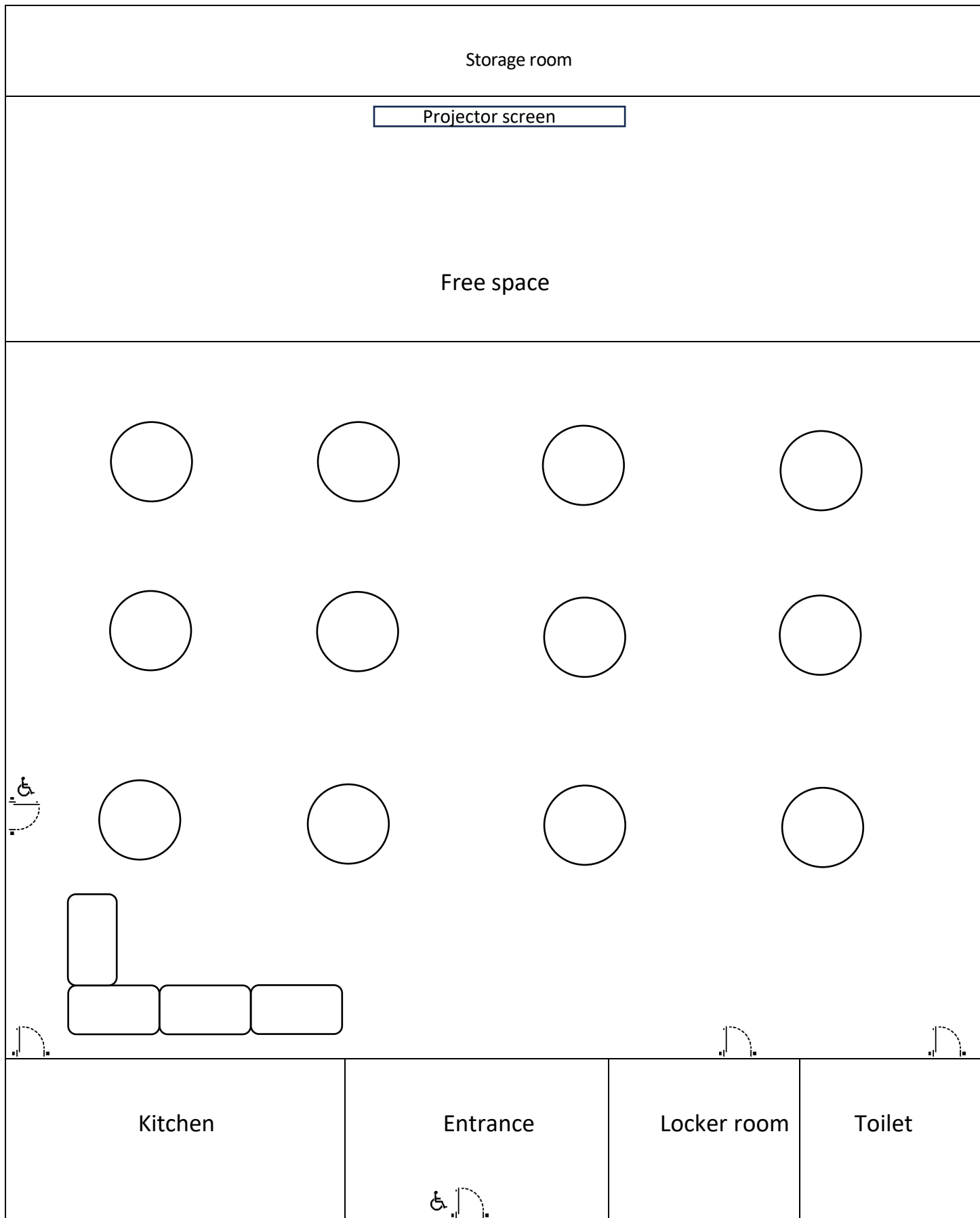
# Harpell Center

## Room plan B (64 people)



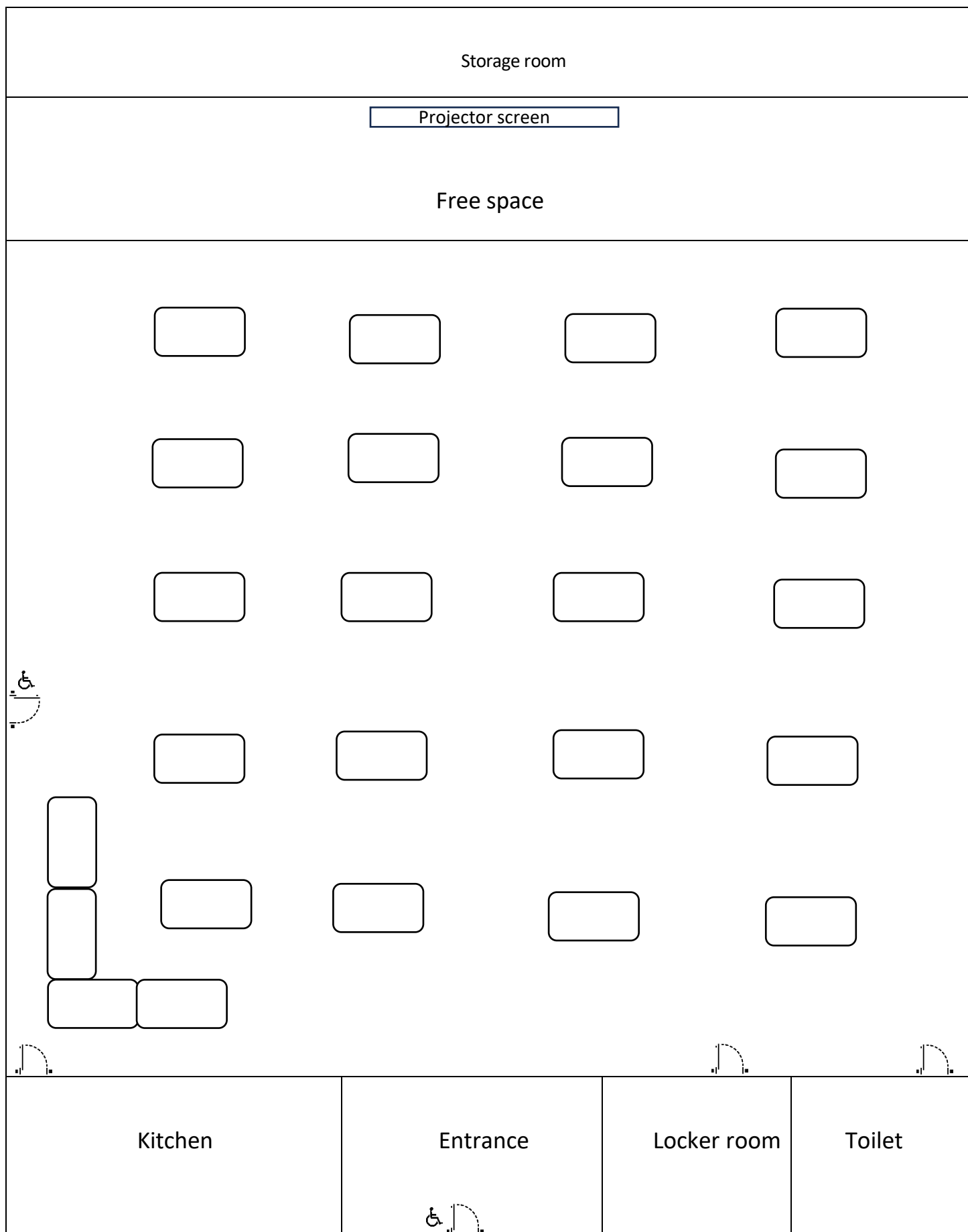
# Harpell Center

## Room plan C (96 people)



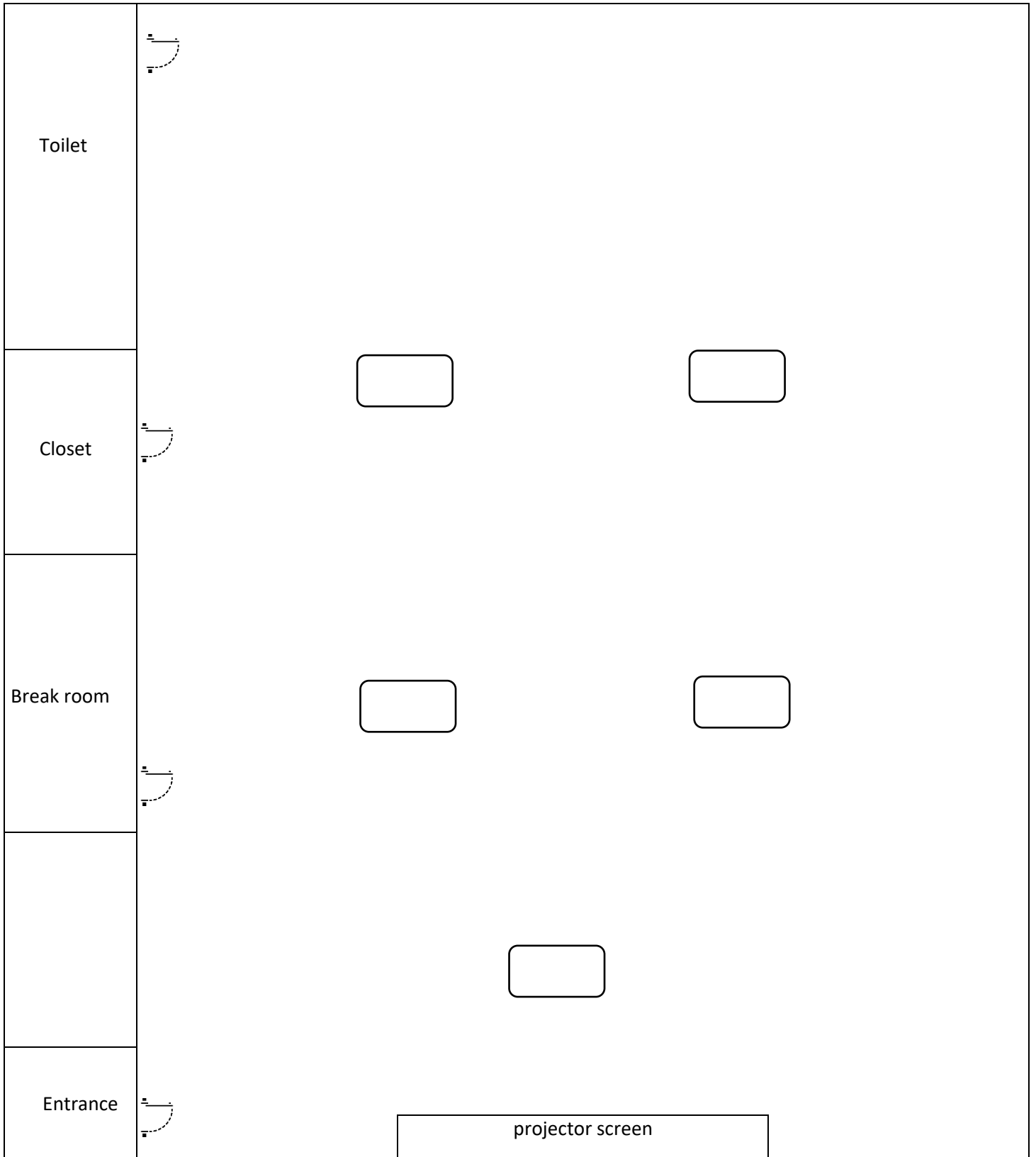
# Harpell Center

## Room plan D (120 people)

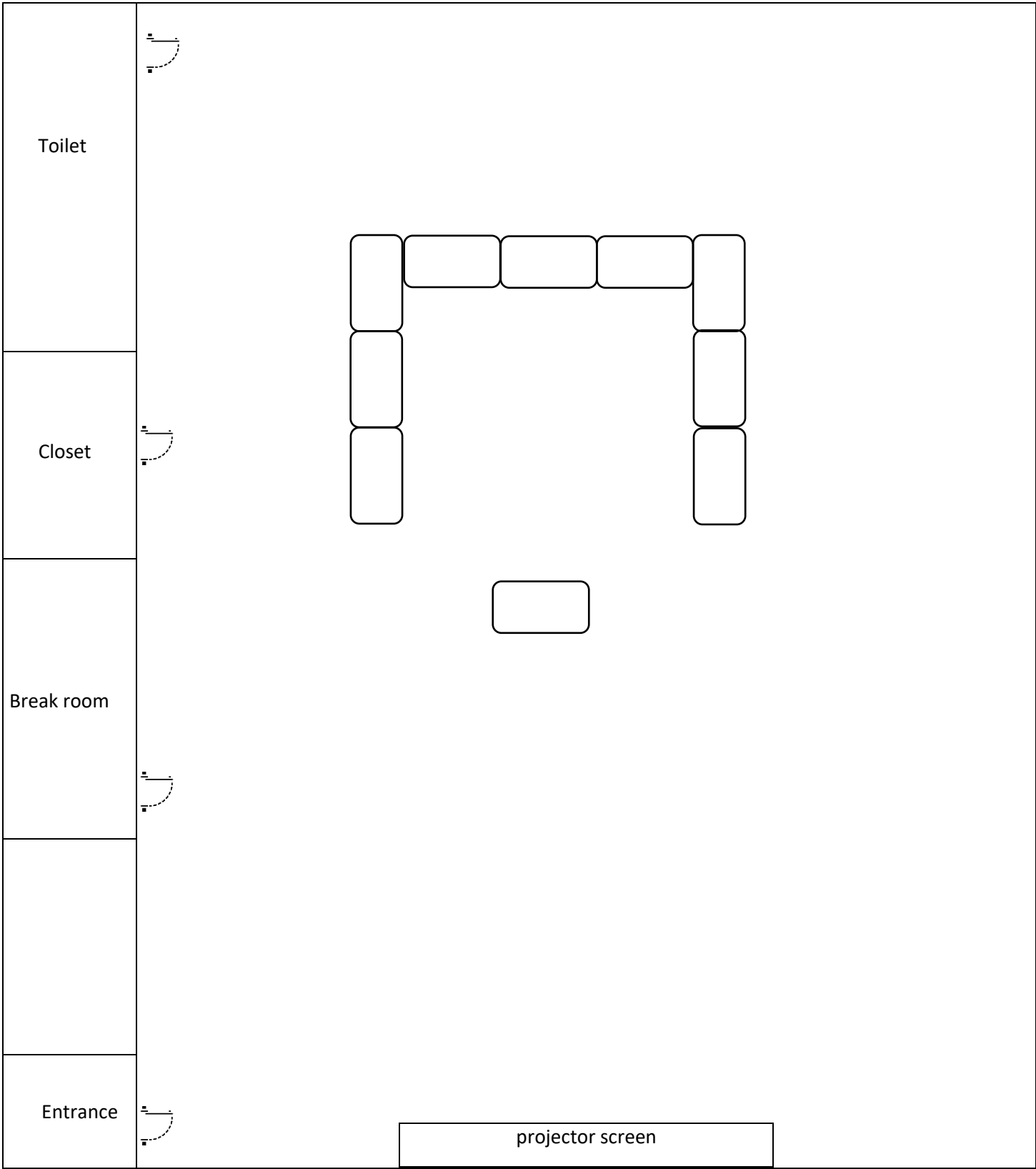


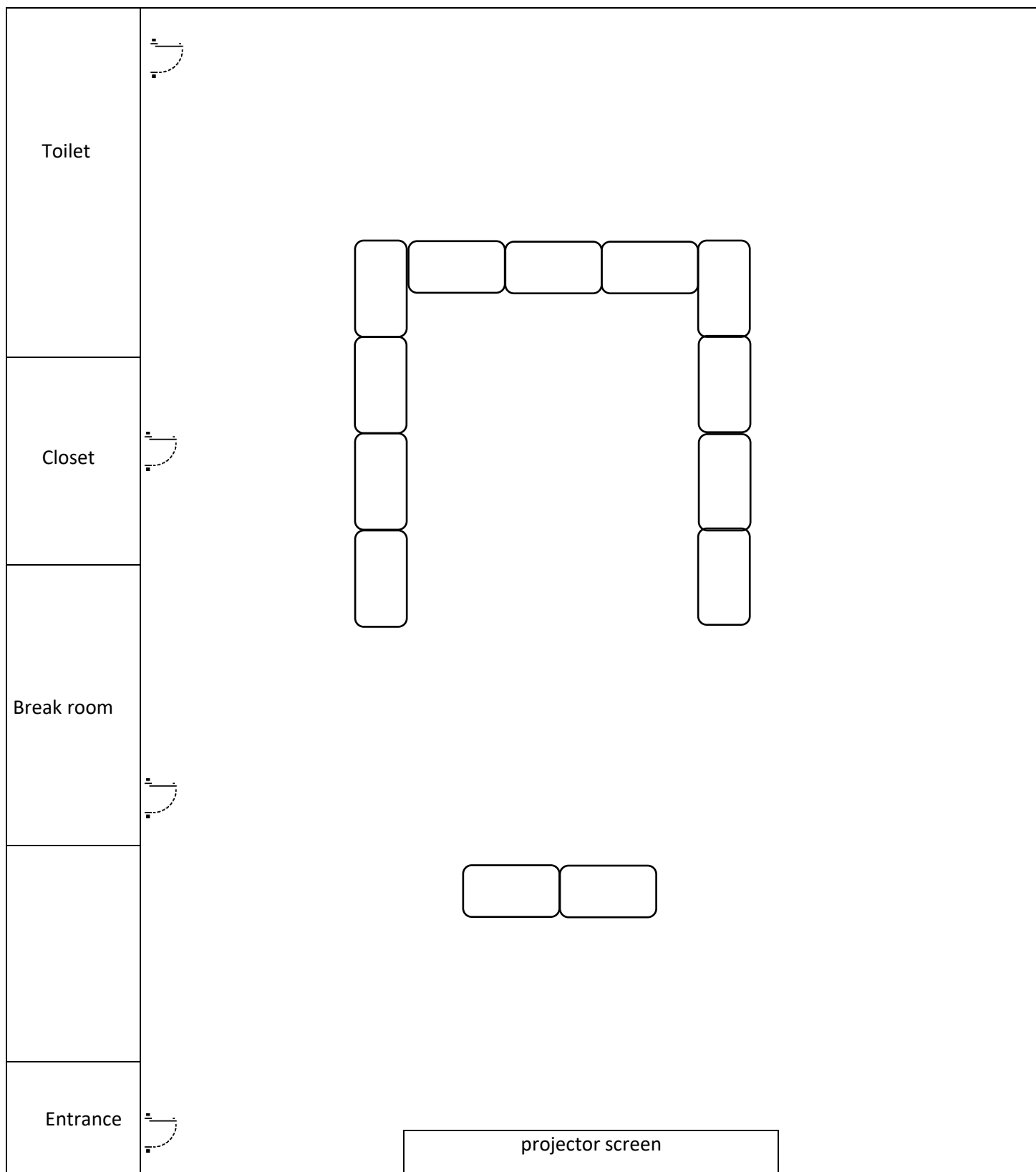
# Harpell Center 2<sup>e</sup> floor

## Room plan A (10 people)



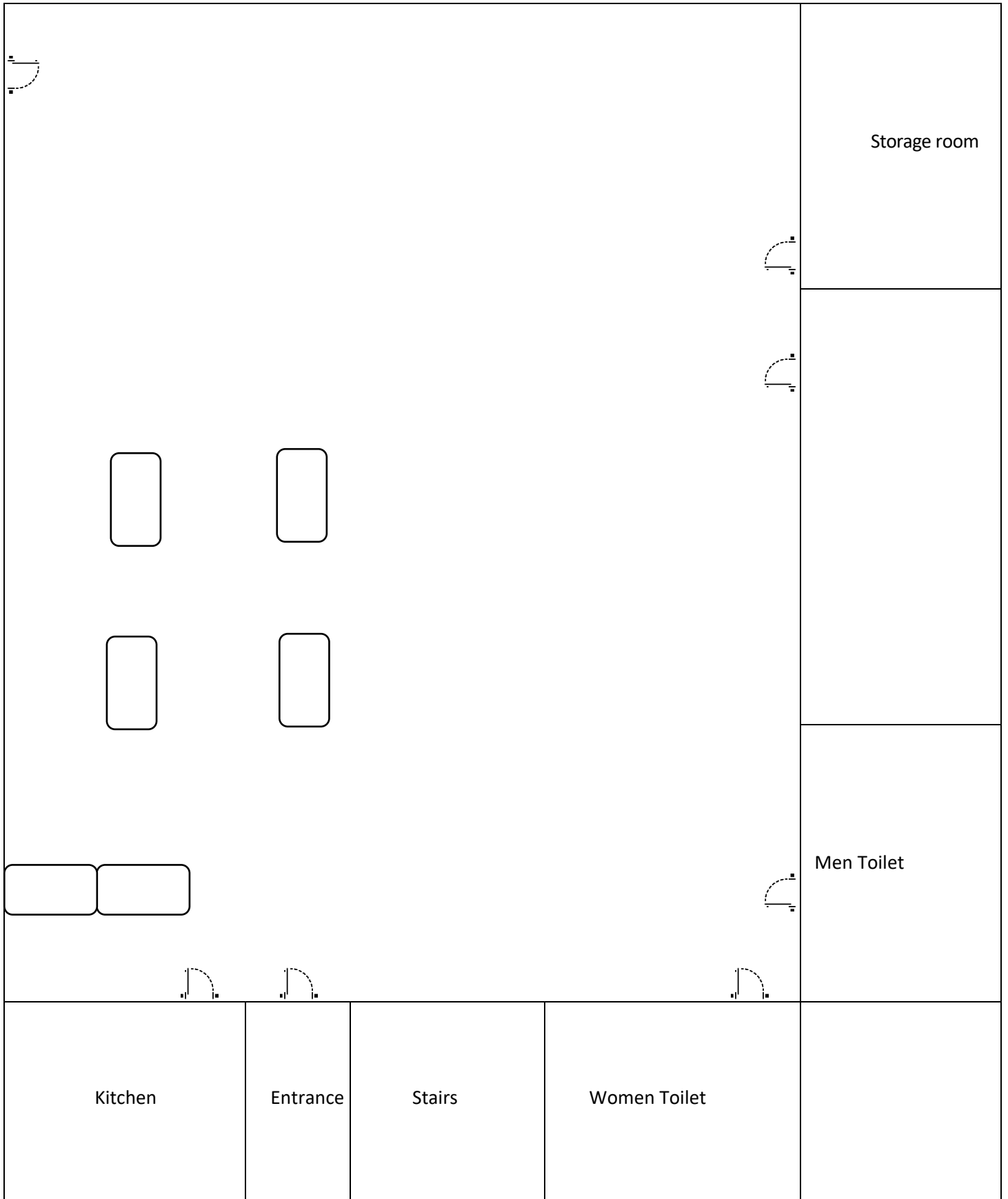






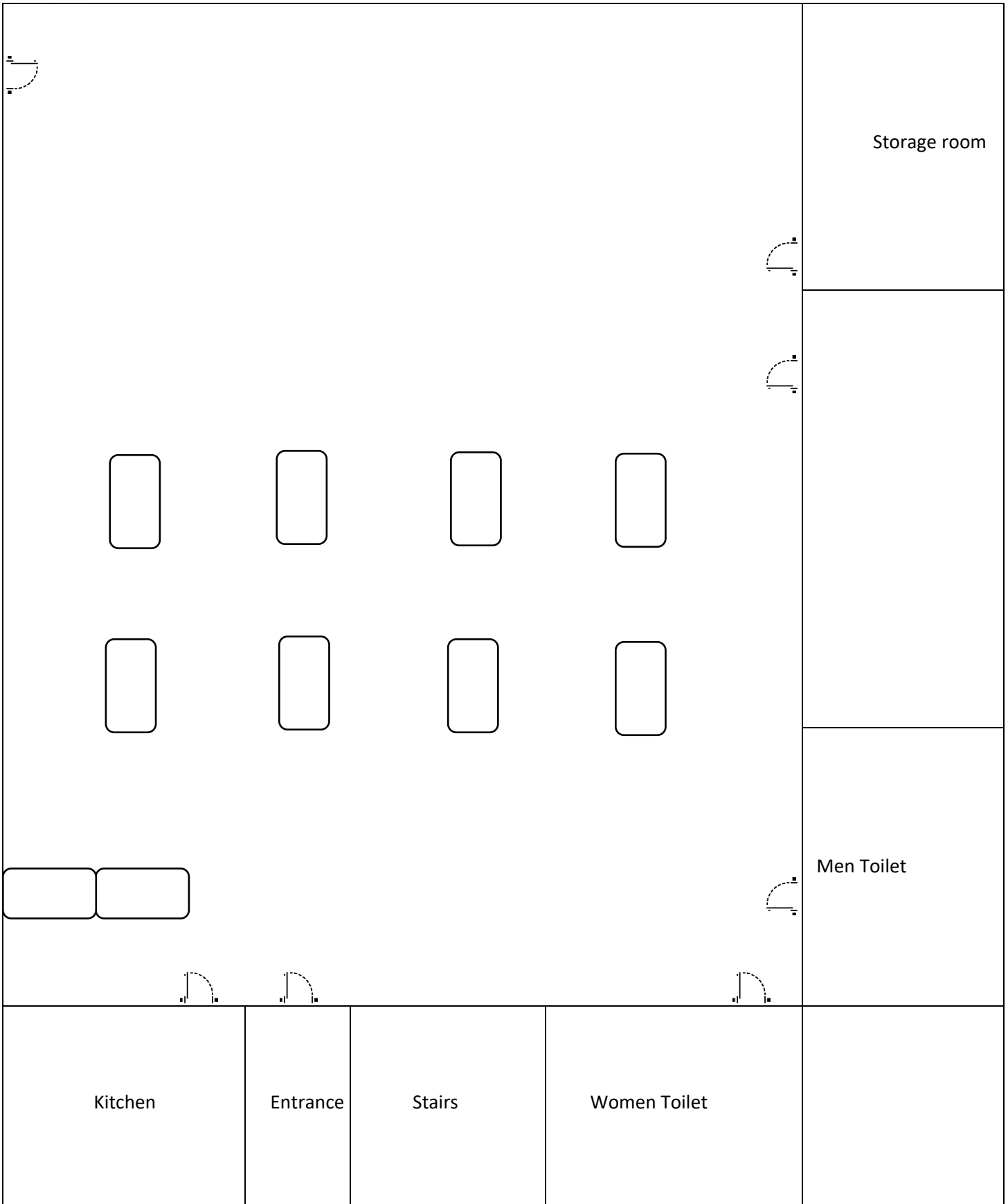
# Aumais Park Cottage

## Room plan A (24 people)



# Aumais Park Cottage

## Room plan B (48 people)





# Aumais Park Cottage

## Room plan C (72 people)

